



Canna-Farm, LLC

Proposal for Marijuana Establishment at
1 Turner Street, Attleboro, MA (fka 330 Turner Street, Attleboro, MA)

Community Outreach Meeting
Presentation
October 14, 2022

LEADERSHIP



Xue Zhen (Kelly) Li – President & Owner

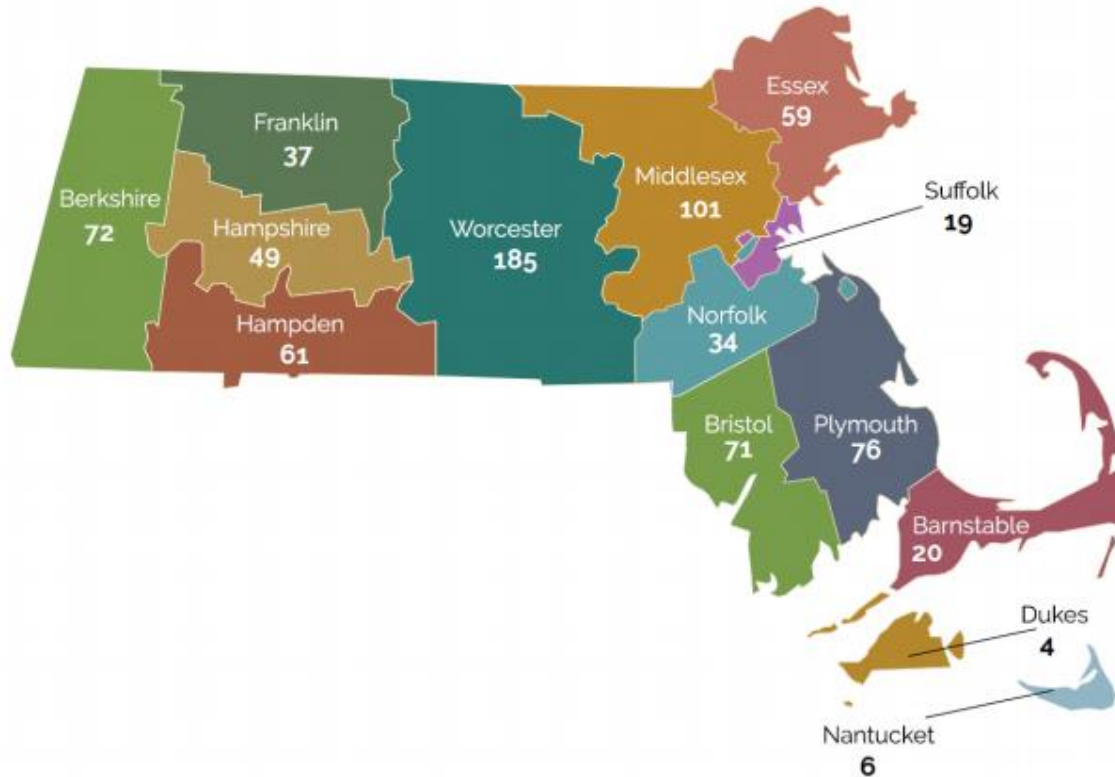
- Women, Minority Owner
- Second generation immigrant entrepreneur
- Six years of experience in hydroponic industry



WoShao (Joe) Li – Master Grower

- Five years of growing experience in the horticulture industry
- Second generation immigrant entrepreneur

CANNABIS IN MASSACHUSETTS



Massachusetts Industry

Snapshot:

- 10,332 Adult-use Marijuana Establishment Applications, 1,355 Approved Licenses
- Total gross sales: \$2B+
- 24,186 Agent Registrations

PROPOSED FACILITY

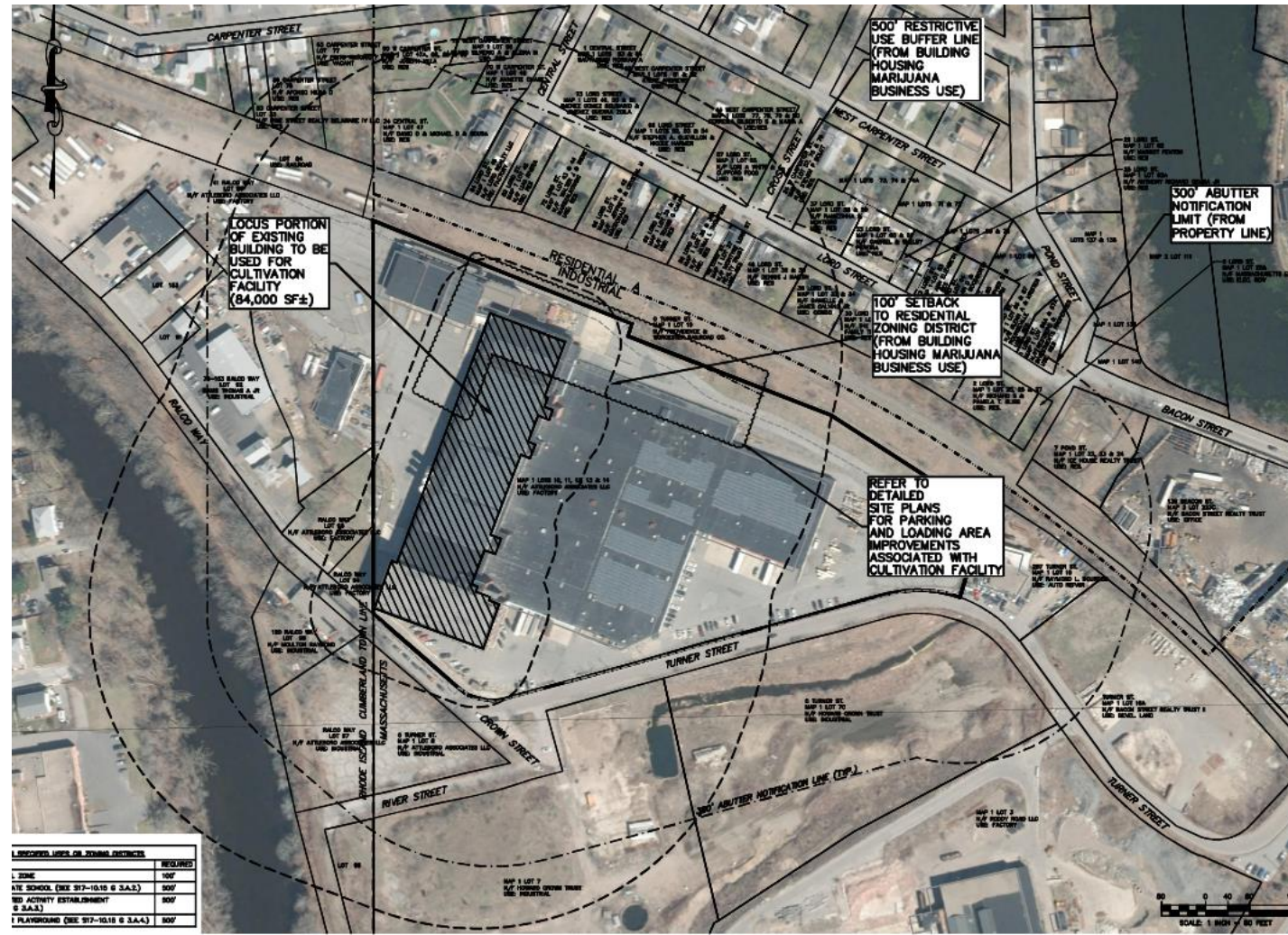
- Marijuana Cultivation and Marijuana Product Manufacturing Establishment
- 1 Turner Street, Attleboro, MA (fka 330 Turner Street)
- Approximately ~84,000 SF on second floor
- Hours: 24/7 hours of cultivation
- 15-20 employees, commitment to use best efforts to hire locally and hire diversity
- At least 21 exclusive Parking Spaces for Canna-Farm, LLC immediately next to the entrance of the Facility
- Product pickup from secure side loading dock



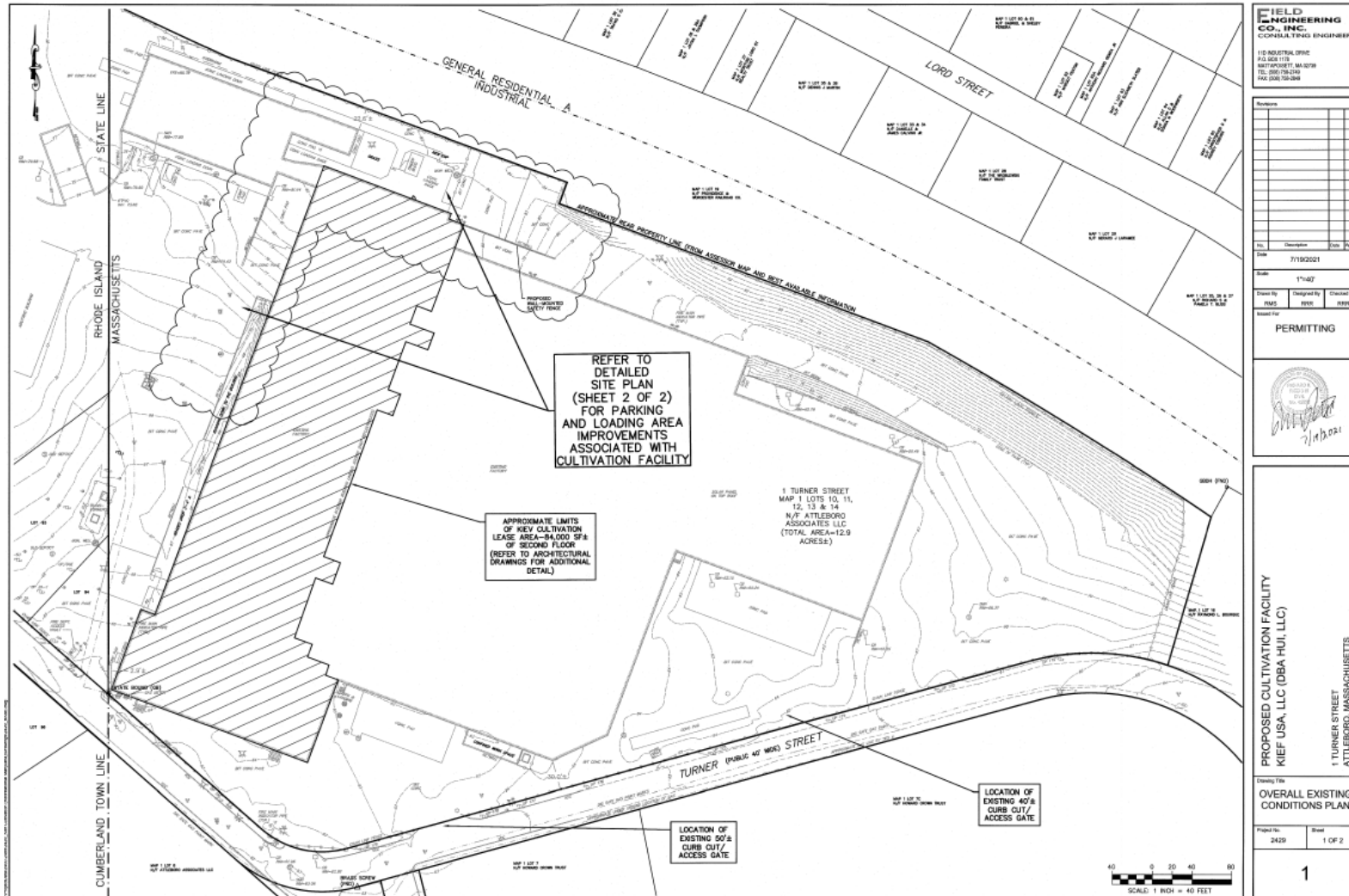
ZONING/LOCATION

1 Turner Street, Attleboro, MA (fka 330 Turner Street)

- Industrial Zoning District
- Second floor of Existing ~84,000 SF building
- 21 exclusive Parking Spaces for the proposed Facility (more available on site)
- Building is not within 500 feet of any school (grades K-12), day care, public park, etc.
- Building is not within 100 feet of any residences or residential zoning districts



PROPOSED SITE PLAN



FIELD ENGINEERING CO., INC.
CONSULTING ENGINEERS

110 INDUSTRIAL OFFICE
P.O. BOX 1178
WESTPORT, MA 02798
TEL: 508/796-2349
FAX: 508/796-2348

No.	Description	Date	Drawn

Date: 7/19/2021

Scale: 1"=40'

Drawn By: HSE
Designed By: HSE
Checked By: HSE

PERMITTING

[Signature]
7/19/2021

PROPOSED CULTIVATION FACILITY
KIEF USA, LLC (DBA HUI, LLC)

1 TURNER STREET
ATTLEBORO, MASSACHUSETTS

Drawing Title:
OVERALL EXISTING CONDITIONS PLAN

Project No:	Sheet:
2429	1 OF 2

1

SECURITY

- Security measures will be fully compliant with 935 CMR 500.110 and provide safety measures to deter and prevent unauthorized entrance into areas containing marijuana and theft of marijuana, and to protect the premises, employees, consumers, and the general public.
 - Perimeter Alarms
 - Motion detection
 - 24/7 recorded video surveillance
 - Panic alarms connect to local safety and law enforcement
 - Limited access only door control system

DIVERSION PREVENTION

- Use of state approved METRC seed to sale tracking system
- All employees will have age verified upon hiring and only individuals 21 years of age or older will be eligible for employment
- Identification and visitor badge requirements
- Development of chain of custody policies and procedures approved by the state
- Anti-diversion training for employees

NUISANCE ABATEMENT

- Prepare and follow a detailed set of written operating procedures approved by the State
- Handle and process marijuana in a safe and sanitary manner
- Industry-standard air filtration system will be used to eliminate any possible odor
- Loitering outside the premises is strictly prohibited

PLAN FOR POSITIVE COMMUNITY IMPACT

- Job Creation (15-20 Positions), with priority given to Attleboro residents and minorities
- Active and contributing member of the Attleboro business community
- Enhanced security inside and outside the facility
- Host Community Agreement with Attleboro and increased tax revenue
- Educational Seminars
- Real estate improvements and landscape design



QUESTIONS & ANSWERS

The Questions & Answers portion of the meeting is beginning.

Please submit your questions online via the Q&A button.



Thank you